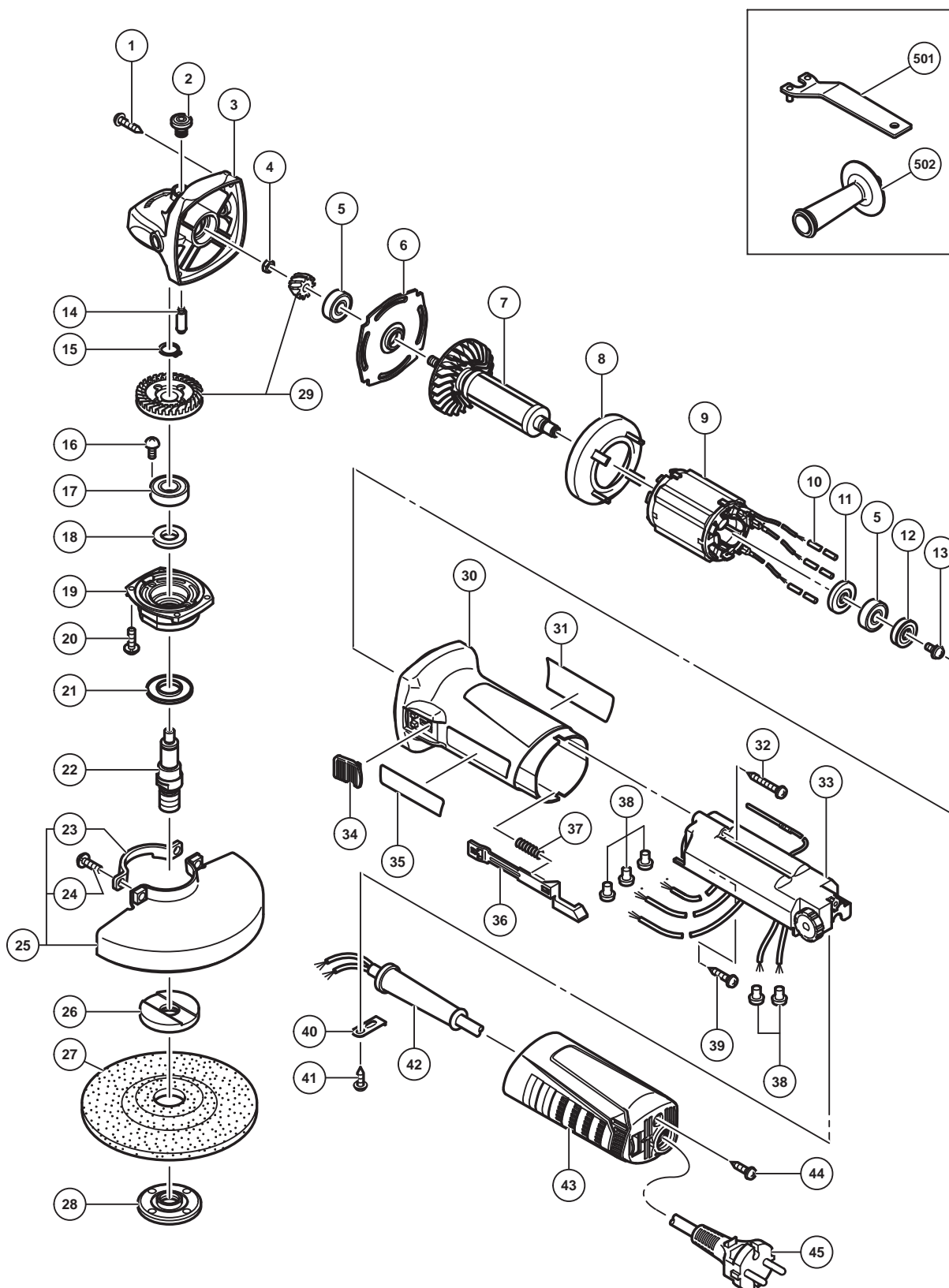


## ELECTRIC TOOL PARTS LIST

### ■ ELECTRONIC DISC GRINDER Model G 13VE

2015-7-9  
(E1)



# PARTS

G 13VE

ITEM NO.	CODE NO.	DESCRIPTION	NO. USED	REMARKS	
1	328643	TAPPING SCREW (W/FLANGE) D4 X 23 (BLACK)	4		
2	301944	PUSHING BUTTON	1		
3	338332	GEAR COVER ASS'Y	1	INCLUD.2,14	
4	309191	SPECIAL NUT M6	1		
5	338337	BALL BEARING 608S	2		
6	334940	BEARING HOLDER	1		
7	360995	ROTOR	1		
8	338346	FAN GUIDE	1		
9	340917C	STATOR 230V	1		
10	339346	TUBE	3		
11	338336	DUST SEAL	1		
12	339344	SENSOR MAGNET	1		
13	338341	SEAL LOCK SCREW (W/WASHER) M3 X 5	1		
14	301943	LOCK PIN	1		
15	939542	RETAINING RING FOR D12 SHAFT (10 PCS.)	1		
16	334942	SLOTTED HD. SCREW (SEAL LOCK) M4	2		
17	6001VV	BALL BEARING 6001VV	1		
18	301946	FELT PACKING	1		
19	334938	PACKING GLAND	1		
20	307127	SEAL LOCK SCREW (W/SP. WASHER) M4 X 12	4		
21	301945	FRINGER	1		
22	339144	SPINDLE	1		
23	301949	SET PLATE	1		
24	338868	SLOTTED PLUS SCREW M5	2		
25	331766	WHEEL GUARD ASS'Y	1	INCLUD.23,24	
26	937817Z	WHEEL WASHER	1		
27	316822	D. C. WHEELS 125MM A36Q (25 PCS.)	1		
28	337329	WHEEL NUT M14	1		
29	338338	GEAR AND PINION SET	1		
30	338329	HOUSING	1		
31		NAME PLATE	1		
32	306664	TAPPING SCREW (W/FLANGE) D4 X 40 (BLACK)	1		
33	339143	CONTROLLER 230V	1		
34	338854	SLIDE SWITCH KNOB	1		
35		HITACHI LABEL	1		
36	339345	SLIDE BAR	1		
37	314429	SPRING	1		
38	959140	CONNECTOR 50091 (10 PCS.)	5		
39	301653	TAPPING SCREW (W/FLANGE) D4 X 20 (BLACK)	1		
40	338334	CORD CLIP	1		
41	305720	TAPPING SCREW (W/FLANGE) D4 X 12	1		
42	953327	CORD ARMOR D8.8	1		
43	339142	TAIL COVER	1		
44	307811	TAPPING SCREW (W/FLANGE) D4 X 16 (BLACK)	1		
45	500247Z	CORD	1		

**G 13VE**

## OPTIONAL ACCESSORIES

Printed in Japan      - 3 -  
(150709N)